

Upgrade Innovation to Master Innovation



Loving music

User manual



Master Innovation Black

Picture with:
Clearaudio tonearm „Universal“
and clearaudio cartridge
„Goldfinger Statement“.



Master Innovation Wood

Picture with:
Clearaudio tonearm „TT1 MI“
and Clearaudio cartridge
„Goldfinger Statement“.

Pic. similar

User manual

Dear **Clearaudio** customer,

Congratulations to your choice to upgrade your *Innovation* to a *Master Innovation* turntable, a world class turntable, handmade in Germany by **Clearaudio electronic GmbH**.

Like the model *Innovation* the *Master Innovation* has a resonance minimizing chassis construction in a sandwich combination with the innovative motor unit (low noise level and high turning moments), which guarantees total isolation of resonances from the turntable chassis, providing the best music reproduction and authentic High End imaging.

The **Clearaudio** patented CMB-Bearing-Technology, an inverted bearing with jewelled and polished ceramic bearing shaft and a bronzed liner, provides frictionless analogue enjoyment.

This user manual described the reconstruction from the turntable *Innovation* to the turntable *Master Innovation*.

For more information regarding the *Master Innovation* you will get a separate user manual.

We wish you a lot of musical enjoyments with your new **Clearaudio** *Master Innovation* turntable.

Clearaudio electronic GmbH

This section must be read before any connection is made to the mains supply.



Safety instructions

1. General information

Check the turntable for any damage before using it. Do not connect the turntable if damaged!

Never connect the turntable if it has been dropped or gotten wet, contact your dealer to have the turntable checked.

Never expose the turntable to rain or moisture.

Never touch the power cord of the device with wet hands.

Regular visual inspections for defective insulation on the connection cable are also recommended for your own safety. A damaged cable should be replaced immediately by a specialist!

Never pull on the power cord to unplug the device. Always pull directly on the plug!

The inside of the turntable is maintenance free. Never open the case or attempt to repair the unit yourself, since this can lead to loss of warranty!

We recommend disconnecting the power supply from the mains if you do not operate the device for a longer period of time.

The turntable does not feature an automatic shut-off mechanism.

Therefore, as soon as the stylus has reached the run-out groove, engage the tonearm lift and switch the turntable off.

Not suitable for children! Scope of delivery may contain small parts that can be swallowed.

2. Intended use

The *Master Innovation* is a turntable for playing records.

The intended use of the *Master Innovation* in accordance with the information provided in the user manual only.

The power supply may only be operated with maximum permissible connection values according to the technical data. Any other use or modification of this product is not intended.

3. Location of installation

Avoid locations with direct sunlight, temperature fluctuations and high humidity.

Likewise, avoid placing electronic devices near heaters, heat lamps, or other devices that produce heat.

The device is designed for operation at room temperature.

No objects with an open flame may be placed on or near the device (burning candles or similar).

4. Overload

The product is designed to comply with all necessary safety regulations. However, you should not leave the device unattended under extreme loads.

5. Maintenance

Never use aggressive cleaning detergent.

Do not use dry cloths for cleaning as this generates static electricity. Suitable cleaning and care products from **Clearaudio** are available from www.analogshop.de or from specialist retailers.

The bearing of the turntable platter can be lubricated every 2 years with the oil provided.

Put 1 or 2 drops of the oil into the bearing for lubrication.

6. Health information

Permanently high volume can lead to various types of hearing damage. Use high volume responsibly!

7. Service

The *Master Innovation* turntable should be repaired during the guarantee period by the manufacturer only, otherwise the warranty claim expires. All **Clearaudio** products should only be serviced by specialist retailers.

If, despite the high production standard, a service is necessary, the *Master Innovation* turntable must be send to **Clearaudio** through your dealer.

8. Transport

Use the original packing material for further transportation of the *Master Innovation* turntable, otherwise serious damage could occur.

Be sure to pack the device exactly as it was shipped.
Safe transport is only guaranteed in the original packaging.

Proceed in reverse as described for assembly when packing.

Always remove the turntable platter and replace the foam securing the sub-platter and cover the bearing with tape as well. Otherwise serious damage can occur.

Remove also the pulley from the motor axle to avoid any damage during transport.

Clearaudio assumes no liability for any damage that may occur due to incorrect packing.

9. Disposal



Do not dispose this product together with other waste.
WEEE Reg. No.: DE26004446

10. CE Marking



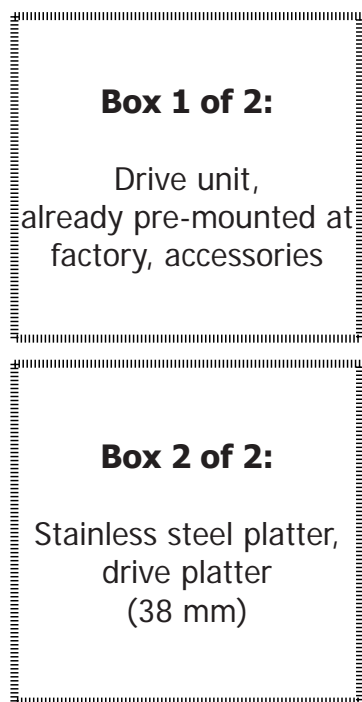
This electronic product corresponds to the applicable guidelines for obtaining the CE mark.



Contents

1. Packing overview	4
2. List of components	5
3. Reconstruction Innovation to Master Innovation.....	6 - 16
4. Fine adjustment of the motor.....	16
5. Troubleshooting	17
6. Technical data	18
Warranty information.....	19

1. Packing overview

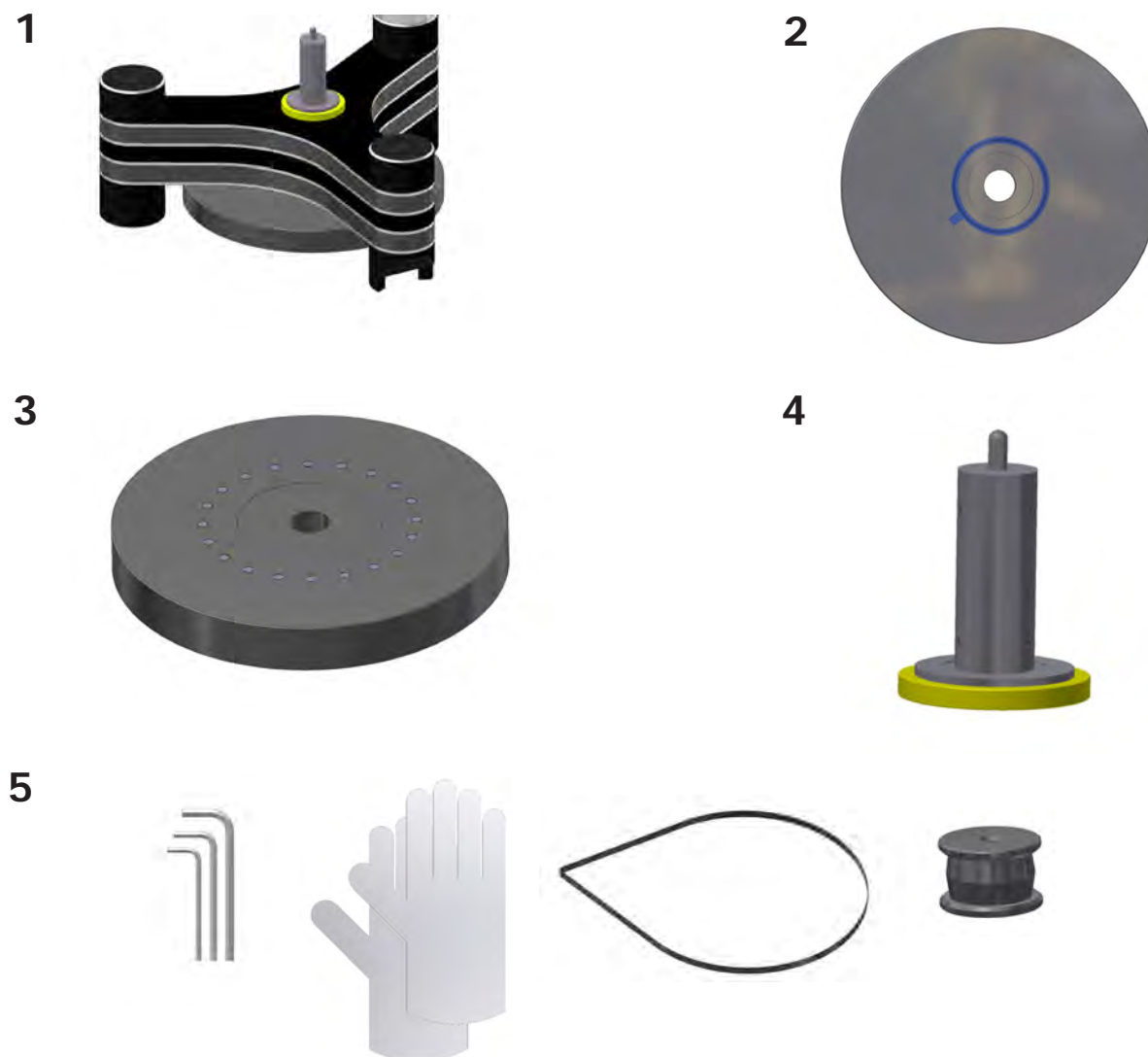


Pic. 1: Packing overview

2. List of components

Clearaudio's special secure packaging for your *Master Innovation* turntable ensures safe transportation. Please keep this original packaging, in case you need to transport or ship the turntable at any point in the future.

Clearaudio *Master Innovation* components list:



Pic. 2: List of components

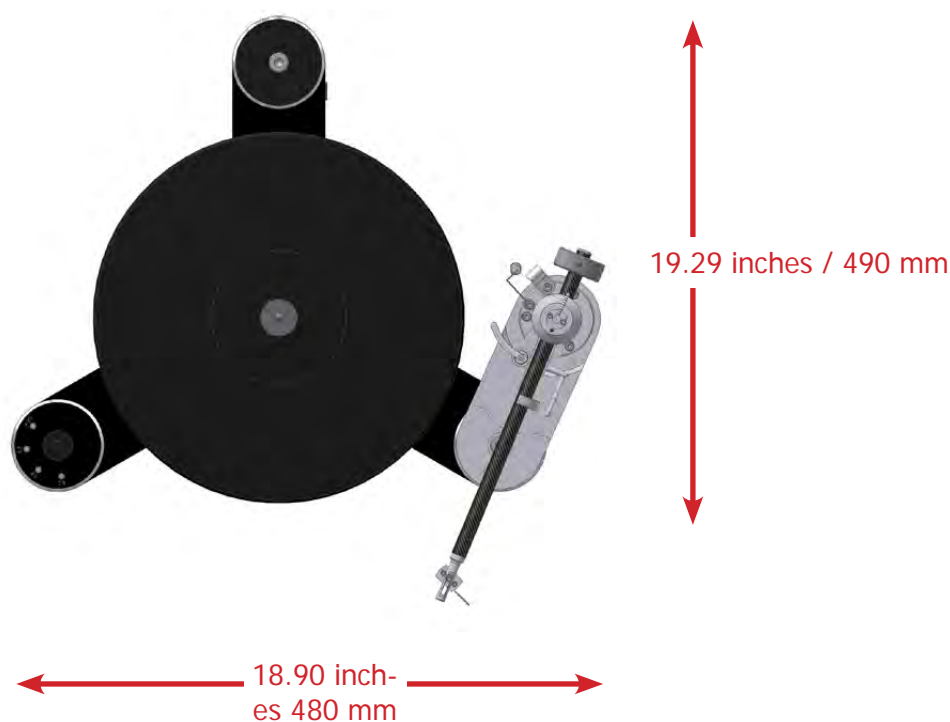
1.	First drive unit, pre-mounted (Box 1 of 2)	4.	Drive bearing
2.	Stainless steel sub-platter (Box 2 of 2)	5.	Accessoires: Pulley, white gloves, 2x drive belts, hex wrench (#8), bearing oil, user manual, QCQ-Card, warranty card
3.	Platter with magnets (28mm) (Box 2 of 2)		

3. Reconstruction Innovation to Master Innovation

The reconstruction of the turntable *Innovation* to *Master Innovation* is easy as most parts of the turntable chassis are already pre-assembled and has been tested at the factory.

Please use the enclosed white gloves in order to avoid scratches or unwanted fingerprints on the turntable parts or platters.

After the reconstruction the *Master Innovation* turntable requires a space for setup of at least (in inch): 18.9 x 19.3.

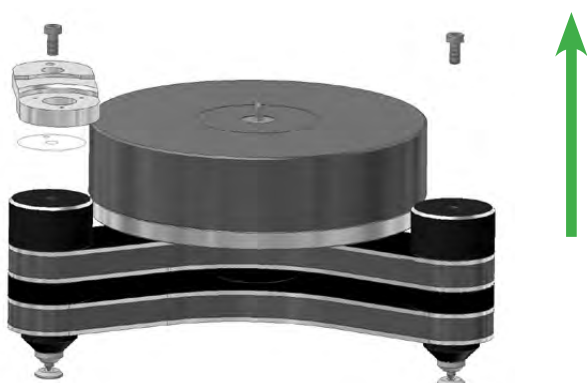


Pic. 3: Required setup space (with **Clearaudio** tonearm *Unify*)

User manual

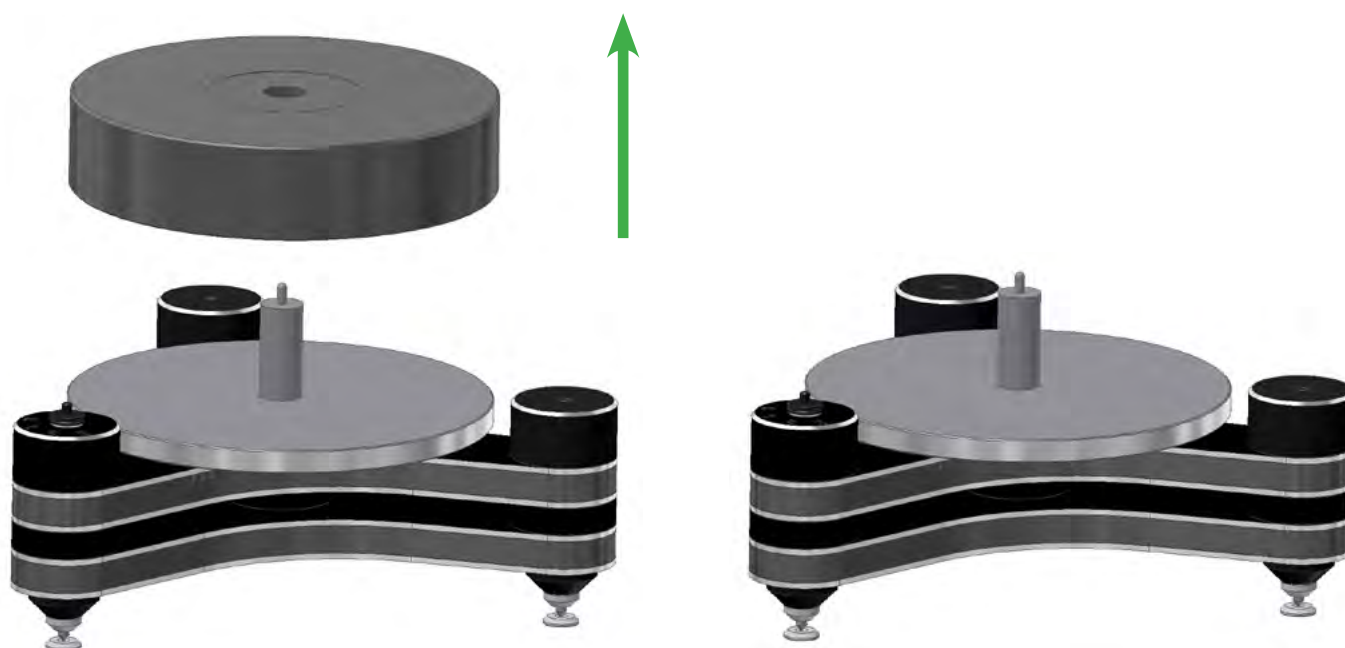
Before you can start to reconstruct the *Innovation* turntable to the *Master Innovation* please pay attention that **all bases of the *Innovation* turntable have the height of 40 mm!** If one of your bases has not the height of 40 mm, please contact the dealer, where you have purchased your *Innovation* turntable.

1.)
Take off the tonearm base and the blind screw on the other base at your *Innovation* turntable (as shown in Pic. 4).



Pic. 4: *Innovation* turntable backside

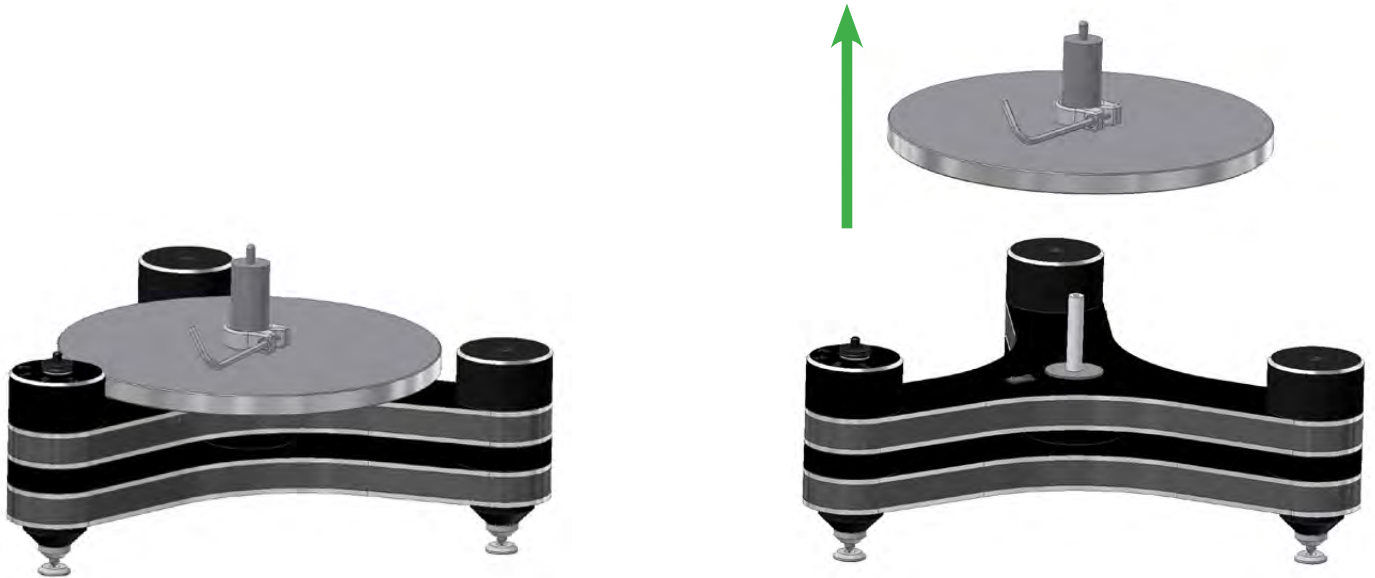
2.)
In the next step take off carefully the drive platter of your *Innovation*. Please keep all platters with you, as you need the platters again for the upgrade to the *Master Innovation*.



Pic. 5: Taking off the drive platter

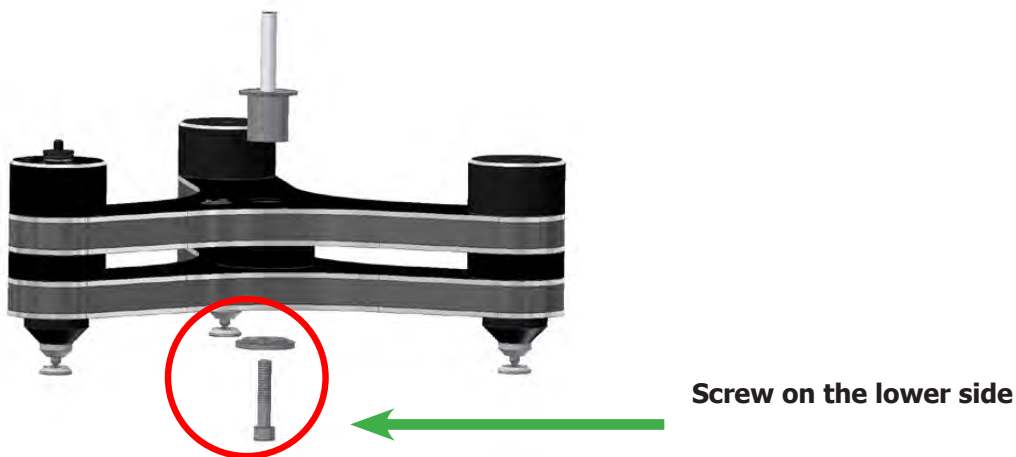
3.)
Now remove carefully the stainless steel platter with the mounting clip (accessory of *Innovation* turntable).

Avoid major side forces to avoid any damages to the ceramic bearing!



Pic. 6: Taking off the stainless steel platter

4.)
Next please remove the bearing of your *Innovation*. For that unscrew carefully the screw on the lower side of the turntable and pull the bearing out of the chassis.



Pic. 7: Removing the bearing

User manual

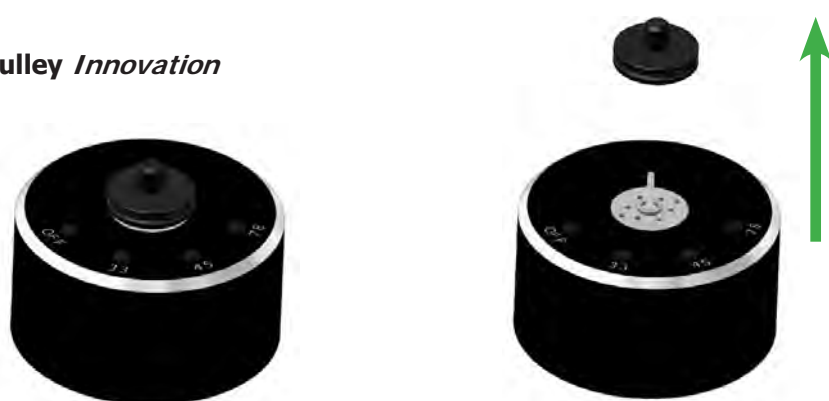
- 5.)**
Take out the delivered drive bearing for the *Master Innovation*.
Please remove carefully any protective security tape from the bearing.
Now you can put the new bearing into the chassis (see pic. 6) and arm the bearing with the delivered screw on the lower side of the turntable.



Pic. 8: Setup of the drive bearing

- 6.)**
Now please exchange the pulley of the *Innovation* turntable with the delivered pulley.

Pulley *Innovation*



Pic. 9: Exchange of the pulleys

Please pay attention that the exchanged *Master Innovation* pulley is flush mounted with the axis of the motor.

Pulley for *Master Innovation*



Pic. 10: Setup of the *Master Innovation* pulley

Now the upgrade from the *Innovation* to the *Master Innovation* is completed and you can switch over to the setup of the *Master Innovation*.

In the user manual for the *Master Innovation* you will find the packing list, packing overview and of course the whole description for the setup of the *Master Innovation*.

To make it easier for you, you can also go ahead with the following description:

7.)

In the next step remove carefully the lamination of the sensor on the upper surface of the turntable chassis.

Please remove the lamination extreme carefully and avoid any soiling and scratches.

Take the stainless steel sub-platter again carefully with both hands and put it onto the bearing. The lower side must show to the bearing. Through a lightly (!!) up and down movement the platter will slip onto the bearing upper part (Pic. 11 and 12).

Please remove the lamination extreme carefully and avoid any soiling and scratches.



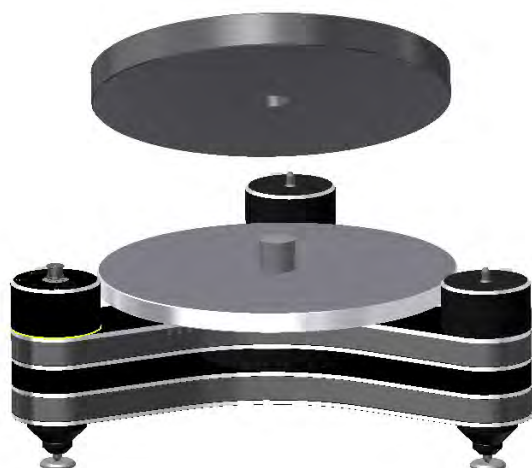
Pic. 11: Setup of the sub platter



Pic. 12: Setup of the sub platter

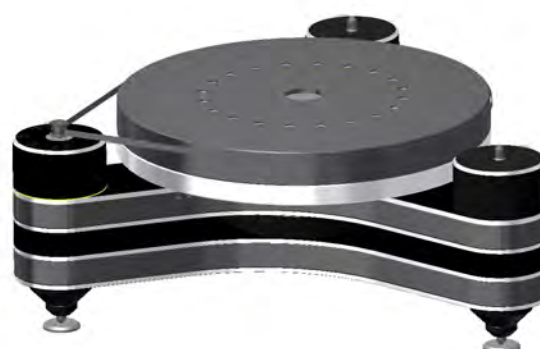
- 8.)** Take the drive platter with both hands carefully out of the box and remove the protection sheet. Please pay attention that the magnets on the upper surface of the drive platter must be be faced upwards.

Magnets (face upwards)



Pic. 13: Setup of the drive platter

- 9.)** Put one of the delivered drive belts around the drive platter and the pulley. Please pay attention that the drive belt is not twisted.

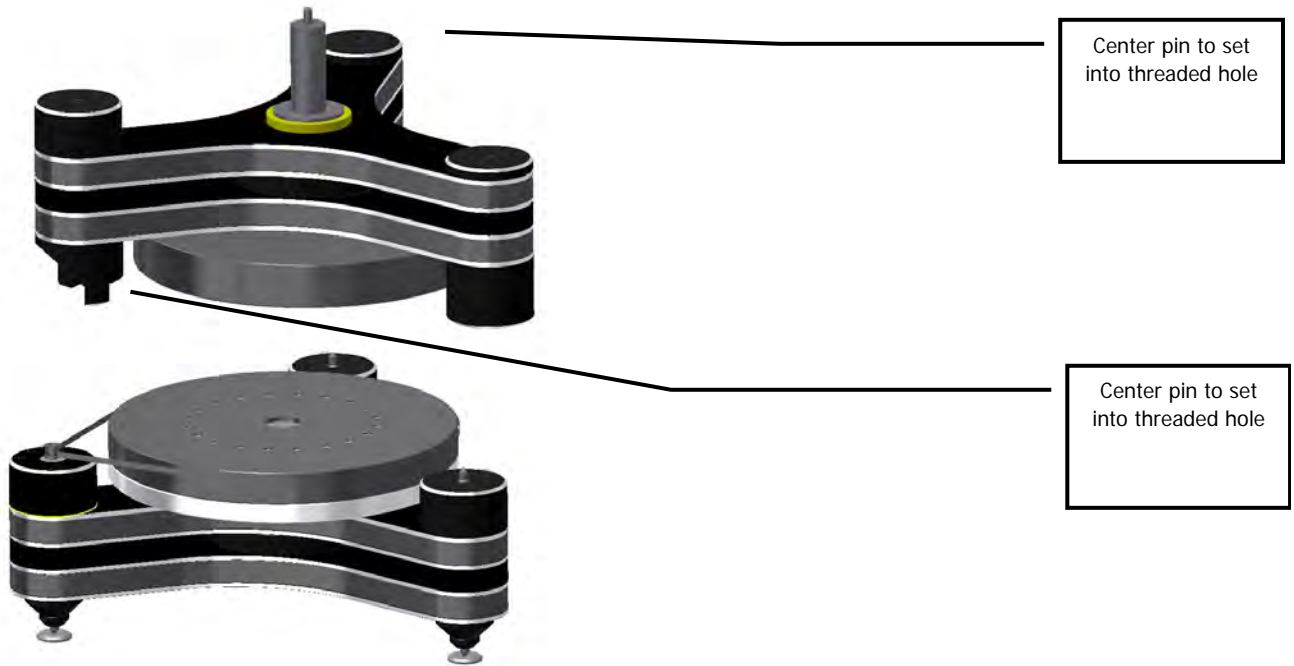


Pic. 12: Setup of the drive belt

10.)

Now take carefully the turntable unit out of the box 2 und set it onto the drive unit as shown in the picture below (pic.13) Please pay attention that the **protection sheet between both units still remain to** avoid any damages!

Please pay attention that **all center pins must be set very carefully into all threaded holes.**



Pic. 13: Setup of the turntable unit



Pic. 14: Finished setup of the turntable unit

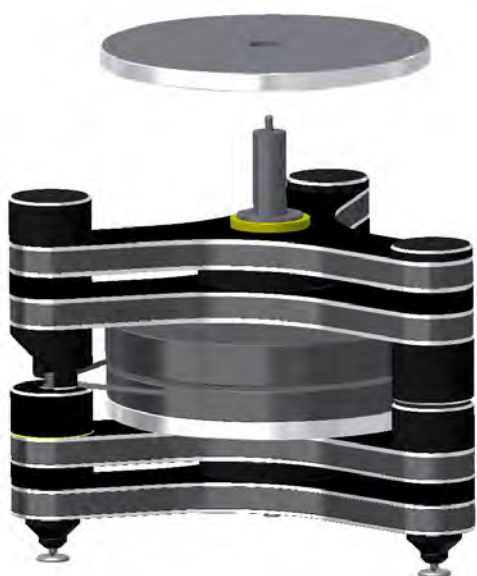
11.)

Take the stainless steel sub-platter out of the box 3 and remove only the protection sheet, but keep the protection film of the upper side of the sub-platter.

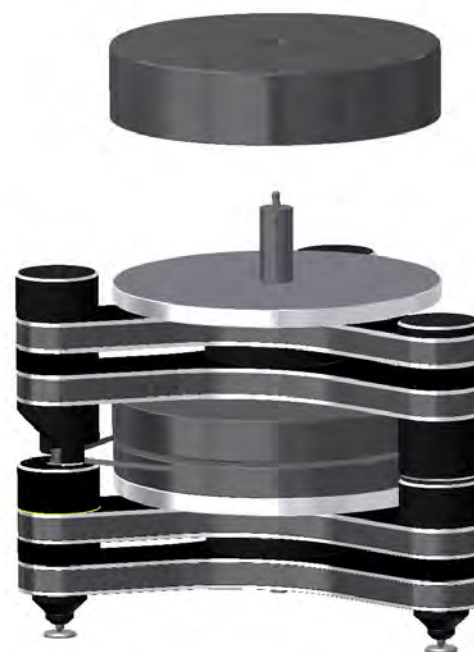
Put the sub-platter very carefully onto the upper part of the bearing (Pic. 15a).

Now take the main platter out of the box and set it up onto the upper part of the bearing. The recess for the label must be faced upwards. Now you can carefully remove the protection film (pic. 15b). To avoid any damages on your bearing, the Delrin platter should have room temperature before the setup begin (approx. 20 ° Celsius).

Avoid major side forces to avoid any damages to the ceramic bearing!



Pic. 15a: Setup of the stainless steel sub-platter



Pic. 15b: Setup of the main platter



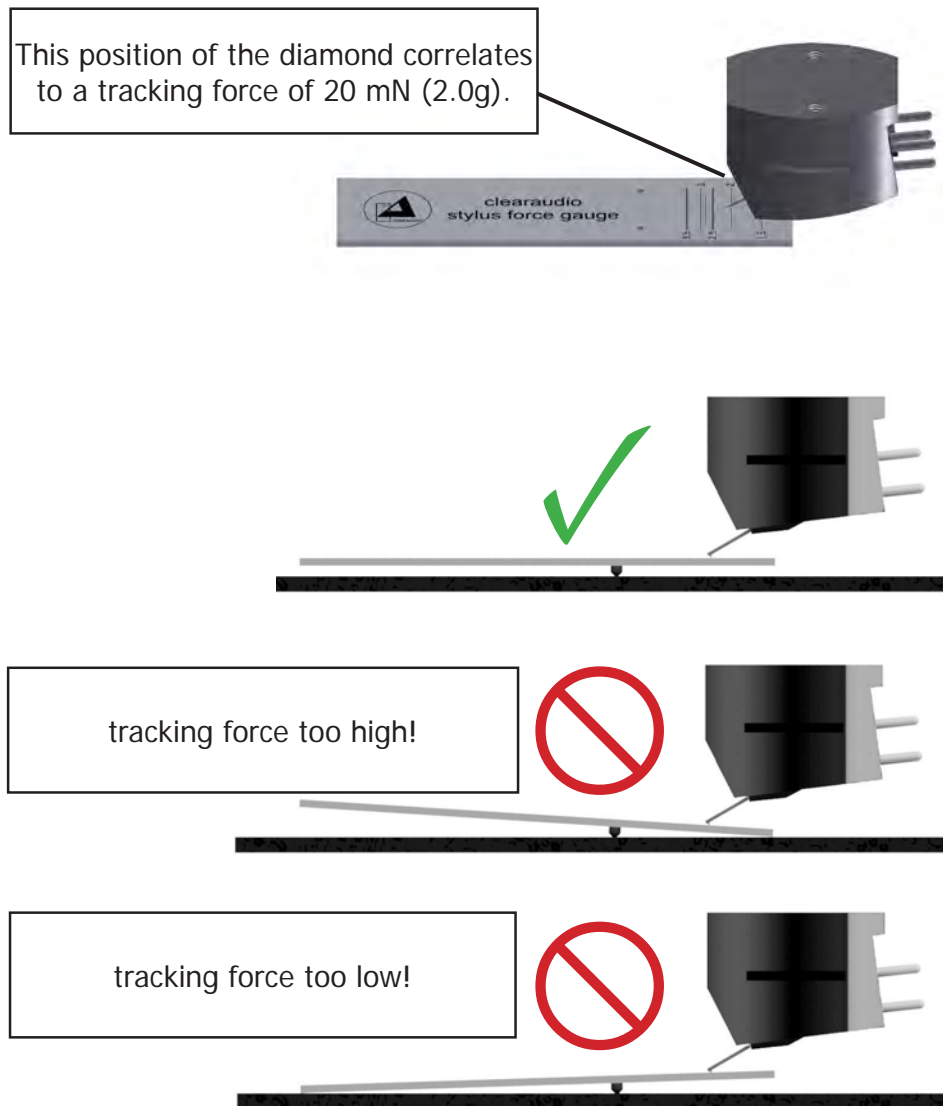
Pic. 16: Finished setup

You will find suitable adjustment equipment under www.clearaudio.de or www.analogshop.de.

12.)

To install the tonearm, please follow the user manual of the respective manufacturer.

If you purchased your **Clearaudio Innovation** turntable as a package with tonearm and cartridge, you will find a *Smart Level Gauge* in your accessory, which will help you to adjust the tracking force of the cartridge:



Pic. 17: Using the *Smart Stylus Gauge*

13.)

To mount and adjust a cartridge, please follow the user manual of the respective manufacturer.

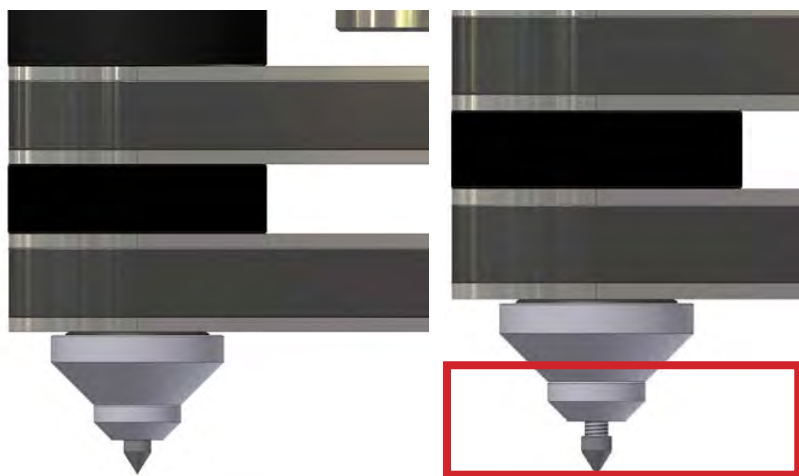
14.)

**The following final adjustment is very important:
Please ensure that your turntable rack is in a levelled position.**

Please check with the bubble level gauge, if your *Master Innovation* turntable is in a levelled position. You can adjust each of the turntables feet to get the turntable levelled. Only if the turntable is in a levelled position you will get the best results with your *Master Innovation* turntable.



Pic. 18a: Alignment of the turntable



Pic. 18b: Adjustment of the height

15.)

Please connect the mains plug to your power supply.



Pic. 19: Connection power supply and motor

16.)

By pushing the sensor switch, marked with "33 1/3" on the motor, the turntable starts to spin until 33 1/3rpm is reached.

After the initial setup we recommend to let the turntable spin for at least 15 to 30 minutes.

This ensures a smoother break in.

4. Fine adjustment of the Master Innovation motor

1.)

The *Master Innovation* is ready to play after ending the modification. But through the rebuilding speed differences could occur, because a complete new turntable is formed. In this case you have to correct the speed. Please proceed as described below.

For the correct adjustment of the speed please put the recommended **Clearaudio Stroboscope Testrecord** on the platter (See accessory pack *Innovation* turntable). Follow hereby the instruction of the *Stroboscope Testrecord* user manual. To check the speed with highest accuracy please use the **Clearaudio Speed Light** (AC039) (www.analogshop.de).

On the front side of your turntable there are three setting trimmers (see pic. 15).



- left trimmer = setting 33 1/3rpm (near turntable motor)
- middle trimmer = setting 4 rpm
- right trimmer = setting 78rpm (near turntable bearing)

Pic. 20: Fine adjustment of the motor

If you like to adjust the speed 33 1/3 rpm , take the aluminium screw driver (see accessories) and turn the left trimmer until you have reached the right speed according to the Stroboscope Testrecord (see user manual "Stroboscope Testrecord").

- Turning the trimmer counter clockwise = reduces the turntable speed
- Turning the trimmer clockwise = raises the turntable speed

Please proceed with the speed adjustment for 45 rpm and 78 rpm in the same way!

Please note:

If the turntable does not reach the correct speed, the sensor or the scale ring could be dirty or dusty. To clean the sensor, please take off the two platters very carefully!

Clean the sensor and the scale ring with a little isopropyl alcohol and a cotton bud.

Be careful and avoid any scratches on the sensor or the scale ring!

If the motor has further more speed variations please contact your nearest authorized **Clearaudio** dealer or directly the **Clearaudio** factory.

Now you are finally ready to play your vinyl records.

We wish you a lot of pleasure with your new *Master Innovation* turntable.



5. Troubleshooting

If you have a problem with your *Master Innovation* turntable, first check the possible causes to rule out incorrect operation.

If the error persists, please contact your dealer!

Never try to open the device and/or repair it yourself, this will void the warranty!

Error	Cause	Measure
Device does not work	Is the power cord plugged in?	Check the connection.
No sound	The tonearm and phono stage are not properly connected.	Check the cable connection between the tonearm and the phono stage.
	Is the amp turned on?	Check the power supply to the amplifier.
	The volume on the amplifier/loudspeaker is set too low or on „mute“.	Check the volume settings.
	Is the cartridge protective cap still attached?	Remove the cartridge's protective cap.
	Is the tonearm in the raised position?	Lower the tonearm into the lead-in groove.
	Is the stylus damaged?	Check the stylus and have the cartridge checked by a specialist if necessary.
Bad sound / noise	Is the record or the stylus dirty or damaged?	Clean the record / or the cartridge. Clearaudio offers many helpful accessories for care and cleaning. In the event of damage, we recommend an assessment by a specialist and, if necessary, an exchange.
	Is the cartridge properly mounted into the tonearm?	Check the installation using the relevant user manual and correct them if necessary.
	Has the tracking force been set too high?	Adjust the tracking force.
	Is the correct operating mode (MM / MC) set on the amplifier?	Check the settings of your phono stage.
	The pre/amp does not have enough gain.	Check the settings of your phono stage.
	Pre/amp is mismatched.	Swap the plugs of the turntable that are connected to the left and right outputs.

Needle bounces or slides across record	Is the record or the stylus dirty or damaged?	Clean the record / or the cartridge. Clearaudio offers many helpful accessories for care and cleaning. In the event of damage, we recommend an assessment by a specialist and, if necessary, an exchange.
	Has the tracking force been set too high?	Adjust the tracking force.
	Is the record deformed or scratched?	Use a record clamp or replace the record.
	Is the turntable level?	Check the alignment of the turntable and adjust if necessary.
Platter does not turn	Is the drive belt properly attached?	Check the position of the drive belt.
	Is the power cord connected properly?	Check the connection.
	No speed was selected / speed selection in position „0“/“OFF“.	Select a speed and start the turntable.
Noisy sound	Is the drive belt properly attached?	Check the position of the drive belt. Is it too loose and needs to be changed?
Humming noises	Contact problems with the signal connections (e.g. cinch plugs, adapters for extensions)	Check all connections; reduce the level on the (pre-)amplifier to a low volume for acoustic checking of gross errors.
	Metal housing acts as an antenna and catches hum.	It can be helpful for conductivity to connect the metal parts of the turntable to the ground of the (phono) preamplifier. The turntable provides a grounding terminal for this purpose. Use a sufficiently thick wire to establish the ground connection.
	The pickup pins are mixed up, not connected correctly or defective.	Check the pin assignment of the pickup.
The music doesn't sound like usual	Wrong speed selected.	Check the record for recommended speed. There are also records in LP format (30 cm) that have to be played at 45 rpm ("maxi singles") and small records in single format (17 cm) that have to be played at 33 rpm (so-called "EP's").
	The turntable is spinning too fast/too slow.	Adjust the speed according to the operating instructions.



6. Technical data

Construction details:	<ul style="list-style-type: none">• Resonance-optimised chassis shape• Made of bullet proof wood and aluminium with precision CNC machined surface• All turntable feet are finely adjustable• Playback with three tonearms possible
Speed options:	33 1/3, 45, 78rpm
Drive unit:	<ul style="list-style-type: none">• High torque 24V DC motor exclusively made for Clearaudio; Optical Speed Control (OSC) in real time through infrared sensor• Decoupled DC motor in chassis; resonance damping device; belt-driven• Magnetic decoupling of turntable and additional drive platter
Bearing:	<ul style="list-style-type: none">• Clearaudio patented ceramic magnetic bearing (CMB) in main platter / upper drive platter assembly• Inverted bearing in lower drive platter"
Platter:	70mm / 2.75 inch main platter, made out of synthetic material with high-density and excellent dimension stability // precision CNC machined surface, solid stainless steel sub-platter, dynamically balanced
Speed accuracy (measured):	< ± 0.05%
Power consumption:	Max. consumption: 9.5 watts Consumption in operation: 4.1 watts Standby mode: 2.4 watts Off mode: 0.0 watts
Total weight:	Approx. 60kg (without tonearm and power supply)
Dimensions (W/D/H):	Approx. 18.11 x 19.09 x 15.59 inches (with tonearm base, without tonearm)
Dimensions (W/D/H):	Approx. 460 x 485 x 396mm (with tonearm base, without tonearm)
Manufacturer's warranty:	5 years*

* Provided that the warranty card is correctly completed and returned to **Clearaudio**, or your product is registered online at <https://clearaudio.de/en/service/registration.php>, within 14 days of purchase.

The full, extended warranty period for the *Master Innovation* turntable is 5 years.

To receive this full **Clearaudio** warranty, you must either complete and return the relevant section of the warranty registration card to **Clearaudio**, or register your product online at <https://clearaudio.de/en/service/registration.php>, within 14 days of purchase.

Otherwise only the legal warranty can be considered.

The full 5 year warranty can only be honoured, if the product is returned in its original packing.

ENGLISH WARRANTY

For warranty information, contact your local **Clearaudio** distributor.

RETAIN YOUR PURCHASE RECEIPT

Your purchase receipt is your permanent record of a valuable purchase. It should be kept in a safe place to be referred to as necessary for insurance purposes or when corresponding with **Clearaudio**.

IMPORTANT

When seeking warranty service, it is the responsibility of the consumer to establish proof and date of purchase. Your purchase receipt or invoice is adequate for such proof.

FOR U.K. ONLY

This undertaking is in addition to a consumer's statutory rights and does not affect those rights in any way.

FRANÇAIS GARANTIE

Pour des informations sur la garantie, contacter le distributeur local **Clearaudio**.

CONSERVER L'ATTESTATION D'ACHAT

L'attestation d'achat est la preuve permanente d'un achat de valeur. La conserver en lieu sûr pour s'y reporter aux fins d'obtention d'une couverture d'assurance ou dans le cadre de correspondances avec **Clearaudio**.

IMPORTANT

Pour l'obtention d'un service couvert par la garantie, il incombe au client d'établir la preuve de l'achat et d'en corroborer la date. Le reçu ou la facture constituent des preuves suffisantes.

DEUTSCH GARANTIE

Bei Garantiefragen wenden Sie sich bitte zunächst an Ihren **Clearaudio** Händler. Heben Sie Ihren Kaufbeleg gut auf.

WICHTIG!

Die Angaben auf Ihrer Quittung erlauben uns die Identifizierung Ihres Gerätes und belegen mit dem Kaufdatum die Dauer Ihrer Garantie-Ansprüche. Für Serviceleistungen benötigen wir stets die Gerätenummer. Diese finden Sie auf dem Typenschild auf der Rückseite des Gerätes oder auch in der beigefügten Garantie-Registrierkarte.

NEDERLANDS GARANTIE

Voor inlichtingen omtrent garantie dient u zich tot uw plaatselijke **Clearaudio**.

UW KWITANTIE, KASSABON E.D. BEWAREN

Uw kwitantie, kassabon e.d. vormen uw bewijs van aankoop van een waardevol artikel en dienen op een veilige plaats bewaard te worden voor evt, verwijzing bijv, in verbind met verzekering of bij correspondentie met **Clearaudio**.

BELANGRIJK

Bij een evt, beroep op de garantie is het de verantwoordelijkheid van de consument een gedateerd bewijs van aankoop te tonen. Uw kassabon of factuur zijn voldoende bewijs.



Loving music

User manual

ITALIANO **GARANZIA**

L'apparecchio è coperto da una garanzia di buon funzionamento della durata di un anno, o del periodo previsto dalla legge, a partire dalla data di acquisto comprovata da un documento attestante il nominativo del Rivenditore e la data di vendita. La garanzia sarà prestata con la sostituzione o la riparazione gratuita delle parti difettose. Non sono coperti da garanzia difetti derivanti da uso improprio, errata installazione, manutenzione effettuata da personale non autorizzato o, comunque, da circostanze che non possano riferirsi a difetti di funzionamento dell'apparecchio. Sono inoltre esclusi dalla garanzia gli interventi inerenti l'installazione e l'allacciamento agli impianti di alimentazione.

Gli apparecchi verranno riparati presso i nostri Centri di Assistenza Autorizzati. Le spese ed i rischi di trasporto sono a carico del cliente. La casa costruttrice declina ogni responsabilità per danni diretti o indiretti provocati dalla inosservanza delle prescrizioni di installazione, uso e manutenzione dettagliate nel presente manuale o per guasti dovuti ad uso continuato a fini professionali.

ESPAÑOL **GARANTIA**

Para obtener información acerca de la garantía póngase en contacto con su distribuidor **Clearaudio**.

GUARDE SU RECIBO DE COMPRA

Su recibo de compra es su prueba permanente de haber adquirido un aparato de valor. Este recibo deberá guardarlo en un lugar seguro y utilizarlo como referencia cuando tenga que hacer uso del seguro o se ponga en contacto con **Clearaudio**.

IMPORTANTE

Cuando solicite el servicio otorgado por la garantía el usuario tiene la responsabilidad de demostrar cuándo efectuó la compra. En este caso, su recibo de compra será la prueba apropiada.



Loving music

clearaudio electronic GmbH

Spardorfer Straße 150
91054 Erlangen
Germany

Phone /Tel.: +49 9131 40300 100

Fax: +49 9131 40300 119

www.clearaudio.de

www.analogshop.de

info@clearaudio.de



Handmade in Germany

Clearaudio Electronic accepts no liability for any misprints.

Technical specifications are subject to change or improvement without prior notice.

Product availability is as long as astock lasts.

Copies and reprints of this document, including extracts, require written consent from

Clearaudio Electronic GmbH, Germany.

2024