

Ovation



Loving music

User manual



Black with black chassis



Silver with natural wood chassis

User manual

Dear **Clearaudio** customer,

You have purchased a State-Of-The-Art turntable, the *Ovation*, a world class product of **Clearaudio** electronic GmbH. Congratulations on your purchase!

With the *Ovation* turntable, **Clearaudio** made use of the OSC (Optical-Speed-Control) technology found in the *Innovation* turntables series by implanting it into a precision milled Panzerholz (bullet proof wood) chassis. This chassis is combined with an anti-resonance mat that is capable of absorbing a huge amount of energy. This is due to the use of more than 100,000 small stainless steel balls which absorb unwanted resonance.

Thus, the turntable combines the latest technology and innovation in a classic design, at a perfect price/performance ratio.

Please read this user manual carefully so that you can enjoy all the advantages of your *Ovation* turntable. All information given will help to generate the best performance and avoid any possible damages.

We hope you will enjoy your new **Clearaudio** *Ovation* turntable.

Clearaudio electronic GmbH

Please read the warnings before connecting your *Ovation* turntable to the mains supply.

WARNINGS

- Don't expose your turntable to rain or humidity.
- Don't handle the mains leads with wet hands.
- Don't place or insert anything into the equipment or through ventilation holes.
- No naked flame sources, such as lighted candles, should be placed on the equipment.

CE-MARKING



The **Clearaudio** *Ovation* meets the regulations concerning electromagnetic disturbance (EMC) and low-voltage appliances.

COPYRIGHT

Recording und reproduction of any sound-material may require the consent of the creator.

Please acknowledge the information given in the

- Copyright Act 1956,
- Dramatic and Musical Performers Act 1958,
- Performers Protection Acts 1963 and 1972,
- Any more recent legal regulations.



Contents

1. Packaging overview	4
2. Setup and operation	5 - 12
3. Special notes	13
4. Technical data	14
Warranty information	15 - 16

1. Packaging overview

The **Clearaudio** *Ovation* turntable is delivered in specially designed custom packaging.

Please check the contents according to the following list before you set up your new **Clearaudio** *Ovation* turntable.

1. Layer (top):

Top of bearing, belt, fittings and accessories
(Quality and warranty card, bearing oil)

If ordered as set:
tonearm and/or cartridge



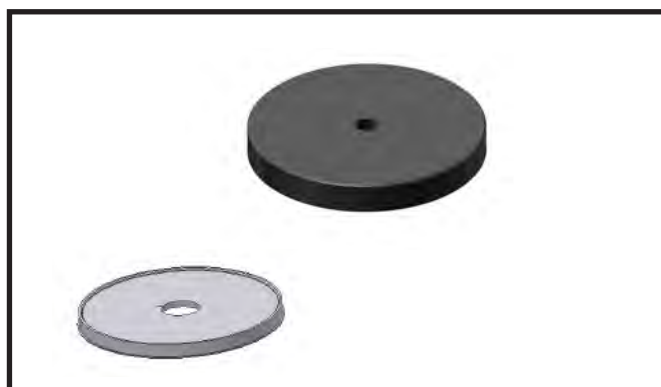
2. Layer (middle):

Turntable chassis



3. Layer (bottom):

Platter, aluminum sub-platter



Pic. 1: Packaging overview

IMPORTANT NOTICE:

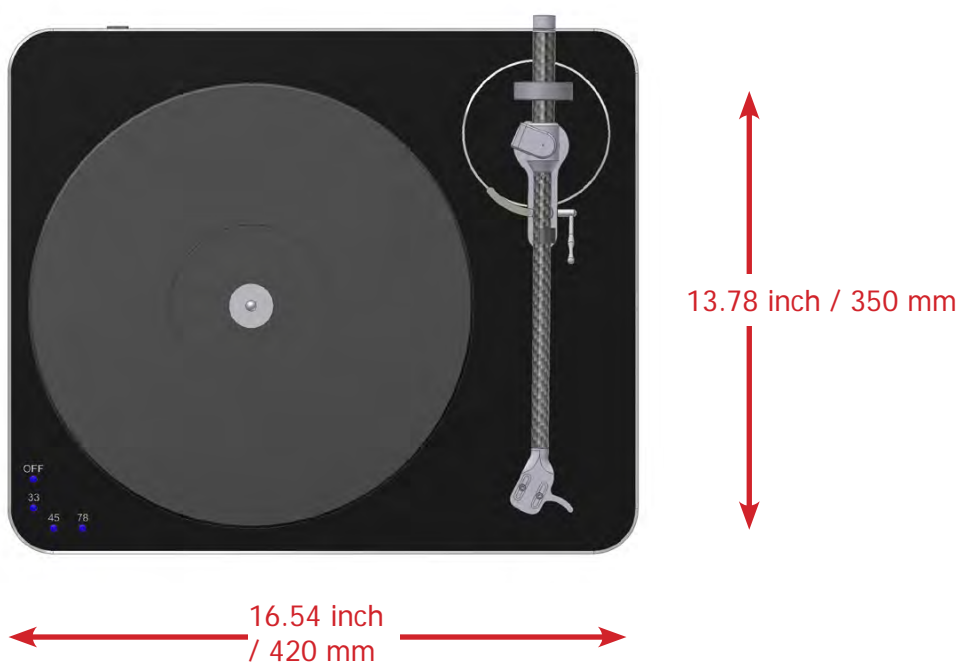
Please double check the tightness of all bolts and armboard mounting hardware, as temperature fluctuations during transit may have caused the hardware to become loose.

2. Setup and operation

The *Ovation* turntable consists of several components, as described in No 1 (Packaging overview). The setup is easy, as some of the components are pre-assembled at the factory. Please make use of the white gloves enclosed in order to avoid scratches or unwanted fingerprints (e.g. on the platter).

Please follow the instructions step by step:

The *Ovation* requires a space of at least 16.54 inch x 13.78 inch for positioning.



Pic. 2: Setup space

2.1

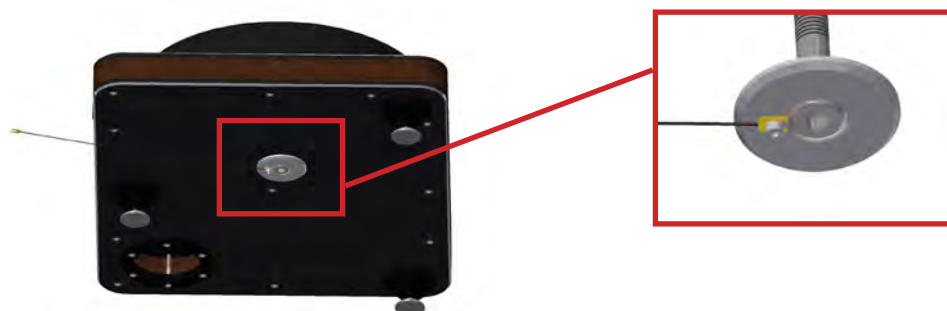
Place the pre-mounted chassis on your hifi-rack or another suitable surface.



Pic. 3: Placing the *Ovation* on the Flat Pads

2.2

To avoid hum noises it can be necessary to ground the bearing. For that please plug in the provided ground cable into the hole of the screw from the bearing at the bottom side of the turntable and connect the other end with your amplifier.



Pic. 4: Grounding the bearing of the *Ovation*

2.3

Please remove the protective seal from the bearing shaft and place two drops of the synthetic bearing oil (Art. No. AC068 available through www.analogshop.de), on the ceramic bearing shaft. Slip the bearing top onto the bearing shaft of the turntable.



Pic. 5: Bearing oil

User manual

2.4

Now you can set the bearing upper part carefully onto the bearing.
To avoid damages make sure you slide the bearing upper part slowly and carefully on the polished ceramic shaft.



Pic. 6: Fitting the bearing upper part

2.5

Now you can set the sub-platter carefully onto the bearing.
First remove the security mat on the backside of the sub-platter (security tape for OSC - graduated collar (Optical Speed Control)).
To avoid any damage, make sure you slide the sub-platter slowly and carefully onto the bearing.
After that, take the included belt and place it around the motor and the sub-platter.
At this point the sub-platter will be higher than the pulley. This is normal, as the CMB requires the weight of the platter to fully engage it.



Pic. 7: Setting the sub-platter



Pic. 7.1: Placing the belt

2.6

Now you can set the platter carefully onto the bearing. To avoid damage, make sure you slide the platter slowly and cautiously on the sub-platter/ bearing assembly. Hold the platter securely, so the platter does not slip or fall on your turntable.



Pic. 8: Setting the platter onto the bearing

2.7

Please check with the bubble level gauge, if your *Ovation* turntable is in a level position.

You can adjust each of the turntable's feet to get the turntable level. Only if the turntable is in a level position will you get the best results with your turntable.

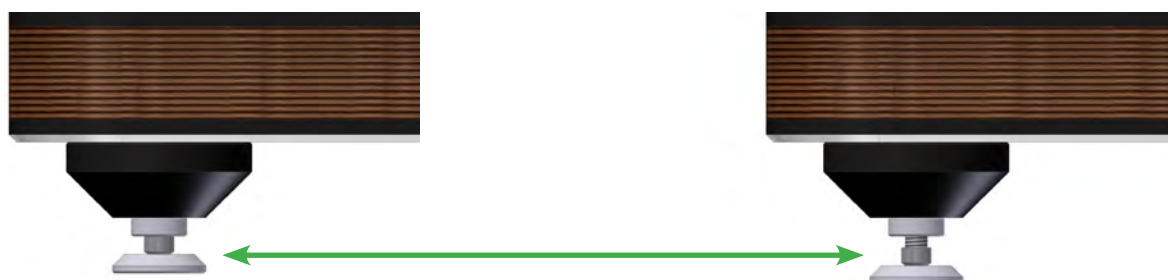
Adjust the height by turning the threaded spike feet. When the table is properly level, lock the feet in place with the nut (see below).

Please note:

Through turning the feet clockwise you will raise the turntable, by turning counter clockwise the turntable will lower.



Pic. 9: Adjustment of level



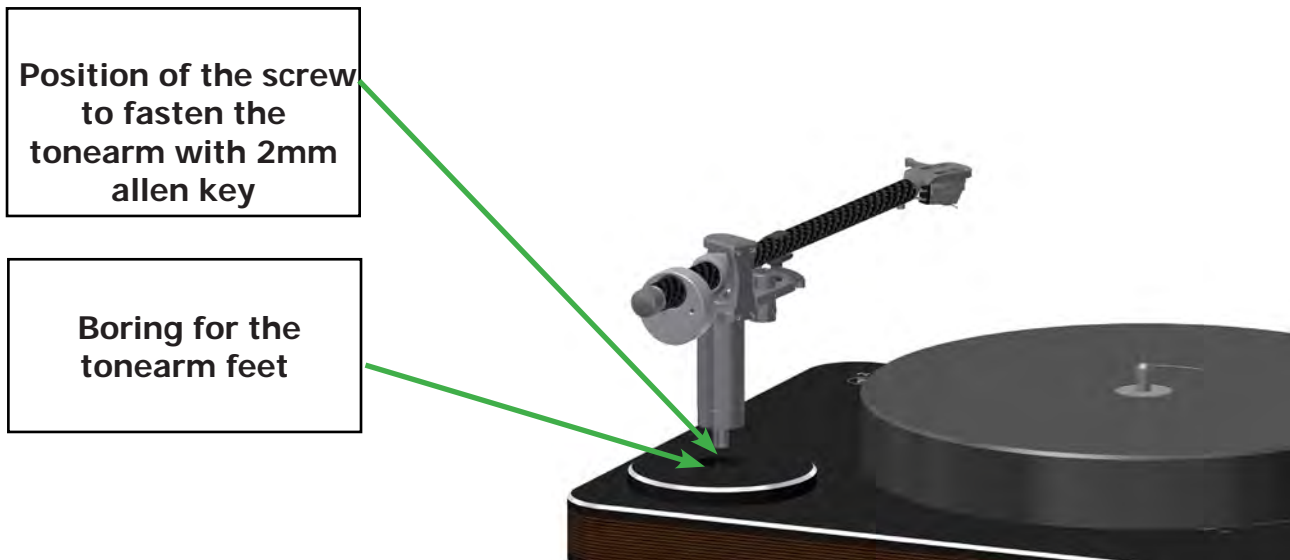
Pic. 9.1: Adjustment of the height

User manual

2.8

For tonearm and cartridge mounting please refer to the user manual of the respective manufacturer.

Now you can connect the *Ovation* turntable with the main supply.

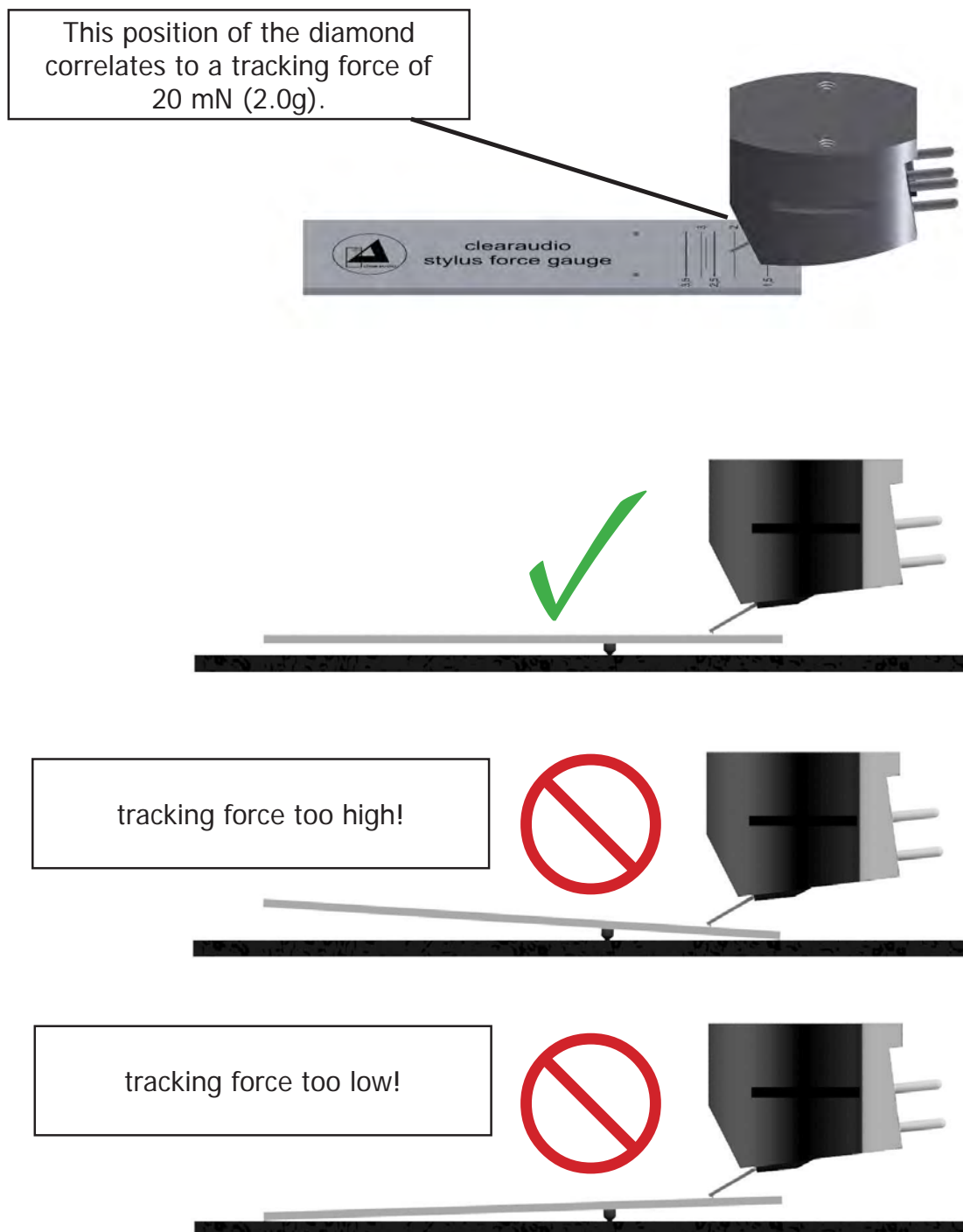


Pic. 10: Rear view Clarify tonearm

1. Insert carefully first the cable and then the tonearm feet through the hole of the tonearm base.
2. Now adjust the tonearm height.
3. At the end secure the tonearm with the screws with are already integrated at the front of the mounting base.
4. For tonearm and cartridge mounting please refer to the user manual of the respective manufacturer.

User manual

If you purchased the **Clearaudio Ovation** as package with tonearm and cartridge, you received also a Smart Stylus Gauge as accessories, which allows you to adjust the tracking force of the cartridge.



Pic. 11: Use of the Smart Stylus Gauge

User manual

Now you can connect the *Ovation* turntable with the main supply.



Pic. 12: Connection to the main supply

2.9 Speed fine adjustment

As the motor adjustment is already pre-set at the factory, you don't have to check the speed before using the turntable for the first time.

Over the time there may be soiling of the sensor or the sensor ring, which can cause some small speed deviations.

If you want to check the speed of your turntable by yourself over time, we recommend to use a *Stroboscope Testrecord*.

To adjust the speed so perfectly and precisely as possible, we recommend the **Clearaudio Stroboscope Testrecord** (Art. No. AC038) and the **Clearaudio Speed Light** (Art. No. AC039, both available at www.anlogshop.de).

On the backside (close to the power supply input) of your turntable there are three setting trimmers:



- Right trimmer = setting 33 1/3 rpm (near power supply jack)
- Middle trimmer = setting 45 rpm
- Left trimmer = setting 78 rpm

Pic. 13: Speed fine adjustment

If you would like to adjust the 33 1/3 speed, take the aluminum screw driver (see accessories) and turn the right trimmer until you have reached the right speed according to the Stroboscope Testrecord (please follow the user manual of the respective manufacturer).

- Turning the trimmer counter clockwise = reduces the turntable speed
- Turning the trimmer clockwise = increases the turntable speed

Please proceed with the speed adjustment for 45 rpm and 78 rpm in the same way!

Please note:

If the turntable does not reach the correct speed, the sensor or the scale ring could be dirty or dusty. To clean the sensor, please take off the two platters very carefully!
Clean the sensor and the scale ring with a little isopropyl alcohol and a cotton bud.
Be careful to avoid scratching the sensor or the scale ring!

If the motor has further speed issues please contact your nearest authorized **Clearaudio** dealer or directly the **Clearaudio** factory under info@clearaudio.de (complete address see page 13).

Now you are finally ready to play your vinyl records!

We wish you a lot of pleasure with your new *Ovation* turntable.



3. Special notes

3.1 Maintenance

- The **Clearaudio** *Ovation* does not require extensive maintenance.
- If the *Ovation* turntable is a longer time not in use, please disconnect the motor from the main supply
- Every two years you can lubricate the bearing of the turntable platter with the delivered oil. In this case it is enough to put 1 or 2 drops of the oil into bearing.
- Please take special caution to any damages of the power cord. Any damages should be repaired only by authorized personal. A damaged power cord must be exchanged immediately!
- For a new turntable that has recently been shipped, has been un-used for a significant period of time, or has recently been shipped or transported to a different environment, it is advisable to double-check and re-tighten all chassis and armboard bolts on the underside of the turntable. Due to the various materials used in the turntable plinth that can expand or contract at different rates as a result of temperature and humidity changes, these bolts may become loose and need to be re-tightened.

Caution!

Please use only non alcoholic fluids and only fluids specially used for acrylic, to clean the *Ovation* turntable.

Otherwise damage on the material or the surface can occur!

Don't use try cloths for cleaning because of the electrostatic charging. Suitable cleaning fluids will be available at Clearaudio (www.analogshop.de) or your Hifi dealer.

3.2 Transportation

Send / ship the *Ovation* turntable always and only in the original packing!!!

Only in the original packing **Clearaudio** can provide the warranty. If you repackage the turntable, please make all steps inverted like at installation and setup (chapter 2).

- If any transportation of the *Ovation* turntable should be necessary, please always remove the turntable platter and the shaft holder. Otherwise serious damage can occur!
- To avoid any dust coming into the bearing, the bearing hole needs to be covered as well.

3.3 Service

In case of any necessary, service for all **Clearaudio** products should be done by authorized personal only. In case of any repair, the **Clearaudio** *Ovation* turntable needs to be send to your nearest authorized **Clearaudio** distributor, dealer or directly to the **Clearaudio** factory.

Clearaudio electronic GmbH

Spardorfer Str. 150

91054 Erlangen

Germany

Phone.: +49 9131 40300 100

Fax: +49 9131 40300 119

www.clearaudio.de

www.analogshop.de

info@clearaudio.de

4. Technical data

Construction details:	Resonance-optimised body, bullet proof wood chassis in sandwich construction embedded between two aluminium plates
Speed change:	Electronic speed change, 33 1/3 rpm, 45 rpm, 78 rpm
Drive unit:	<ul style="list-style-type: none"> - High torque DC motor exclusively made for Clearaudio; Optical Speed Control (OSC) in real time through infrared sensor - Decoupled DC motor in chassis; resonance damping device; flat belt-drive
Bearing:	Cut and polished ceramic shaft in a sintered bronze bushing, Clearaudio patented ceramic magnetic bearing (CMB)
Platter:	Synthetic material, CNC-precision milled surface, 40mm thickness / 1.57 inches Aluminium subplatter
Speed accuracy (measured):	± 0.03%
Power consumption	Max. consumption: 8.6 watts Consumption in operation: 2.5 watts Standby mode: 2.5 watts Off mode: 0.0 watts
Total weight:	approx. 13.5kg
Dimensions (W/D/H in inch):	approx. 16.54 x 13.78 x 5.31 (without tonearm)
Dimensions (W/D/H in mm):	approx. 420 x 350 x 135 (without tonearm)
Manufacturers guarantee*:	5 years*

* Provided that the warranty card is correctly completed and returned to **Clearaudio** within 14 days of purchase.

Clearaudio electronic is not responsible for typographical errors in descriptions. Technical specifications subject to change or improvement without prior notice. Product availability is as long as stock lasts. Copies and reprints of this documents, including extracts, require written consent from **Clearaudio electronic GmbH; Germany**



Loving music

User manual

The warranty time for the *Ovation* turntable is 2 years.

To achieve the full **Clearaudio** warranty of 5 years, it is necessary that you fill out and send the corresponding part of the warranty registration certificate /card back to **Clearaudio**, within two weeks after purchase. Only if the product is returned in its original packing **Clearaudio** can provide the warranty of 5 years.



ENGLISH

WARRANTY

For warranty information, contact your local **Clearaudio** distributor.

RETAIN YOUR PURCHASE RECEIPT

Your purchase receipt is your permanent record of a valuable purchase. It should be kept in a safe place to be referred to as necessary for insurance purposes or when corresponding with **Clearaudio**.

IMPORTANT

When seeking warranty service, it is the responsibility of the consumer to establish proof and date of purchase.

Your purchase receipt or invoice is adequate for such proof.

FOR U.K. ONLY

This undertaking is in addition to a consumer's statutory rights and does not affect those rights in any way.



FRANÇAIS

GARANTIE

Pour des informations sur la garantie, contacter le distributeur local **Clearaudio**.

CONSERVER L'ATTESTATION D'ACHAT

L'attestation d'achat est la preuve permanente d'un achat de valeur. La conserver en lieu sûr pour s'y reporter aux fins d'obtention d'une couverture d'assurance ou dans le cadre de correspondances avec **Clearaudio**.

IMPORTANT

Pour l'obtention d'un service couvert par la garantie, il incombe au client d'établir la preuve de l'achat et d'en corroborer la date. Le reçu ou la facture constituent des preuves suffisantes.



DEUTSCH

GARANTIE

Bei Garantiefragen wenden Sie sich bitte zunächst an Ihren **Clearaudio** Händler. Heben Sie Ihren Kaufbeleg gut auf.

WICHTIG!

Die Angaben auf Ihrer Quittung erlauben uns die Identifizierung Ihres Gerätes und belegen mit dem Kaufdatum die Dauer Ihrer Garantie-Ansprüche. Für Serviceleistungen benötigen wir stets die Gerätenummer. Diese finden Sie auf dem Typenschild auf der Rückseite des Gerätes oder auch in der beigelegten Garantie-Registrierkarte.



NEDERLANDS

GARANTIE

Voor inlichtingen omtrent garantie dient u zich tot uw plaatselijke **Clearaudio**.

UW KWITANTIE, KASSABON E.D. BEWAREN

Uw kwitantie, kassabon e.d. vormen uw bewijs van aankoop van een waardevol artikel en dienen op een veilige plaats bewaard te worden voor evt, verwijzing bijv, in verbend met verzekering of bij correspondentie met **Clearaudio**.

BELANGRIJK

Bij een evt, beroep op de garantie is het de verantwoordelijkheid van de consument een gedateerd bewijs van aankoop te tonen. Uw kassabon of factuur zijn voldoende bewijs.



ITALIANO

GARANZIA

L'apparecchio è coperto da una garanzia di buon funzionamento della durata di un anno, o del periodo previsto dalla legge, a partire dalla data di acquisto comprovata da un documento attestante il nominativo del Rivenditore e la data di vendita. La garanzia sarà prestata con la sostituzione o la riparazione gratuita delle parti difettose. Non sono coperti da garanzia difetti derivanti da uso improprio, errata installazione, manutenzione effettuata da personale non autorizzato o, comunque, da circostanze che non possano riferirsi a difetti di funzionamento dell'apparecchio. Sono inoltre esclusi dalla garanzia gli interventi inerenti l'installazione e l'allacciamento agli impianti di alimentazione.

Gli apparecchi verranno riparati presso i nostri Centri di Assistenza Autorizzati. Le spese ed i rischi di trasporto sono a carico del cliente. La casa costruttrice declina ogni responsabilità per danni diretti o indiretti provocati dalla inosservanza delle prescrizioni di installazione, uso e manutenzione dettagliate nel presente manuale o per guasti dovuti ad uso continuato a fini professionali.



ESPAÑOL

GARANTIA

Para obtener información acerca de la garantía póngase en contacto con su distribuidor **Clearaudio**.

GUARDE SU RECIBO DE COMPRA

Su recibo de compra es su prueba permanente de haber adquirido un aparato de valor, Este recibo deberá guardarlo en un lugar seguro y utilizarlo como referencia cuando tenga que hacer uso del seguro o se ponga en contacto con **Clearaudio**.

IMPORTANTE

Cuando solicite el servicio otorgado por la garantía el usuario tiene la responsabilidad de demostrar cuándo efectuó la compra. En este caso, su recibo de compra será la prueba apropiada.



Loving music

User manual



Loving music

User manual



Loving music

clearaudio electronic GmbH

Spardorfer Straße 150
91054 Erlangen
Germany

Phone/Tel.: +49 9131 40300 100
Fax: +49 9131 40300 119
www.clearaudio.de
www.analogshop.de
info@clearaudio.de

Handmade in Germany

(Technische Änderungen vorbehalten -
Technical specification are subject to change without prior notification)
2018