



# statement phono

Loving music

## User manual



Pic. similar

Dear **Clearaudio**-customer,

Thank you for choosing the *statement phono* preamplifier, a high quality product made in Germany by **Clearaudio**.

To avoid misuse and achieve the best possible results with your *statement phono* preamplifier, please read the instruction and user manual carefully.

The design of the **Clearaudio** *statement phono* preamplifier revolutionizes the reproduction of vinyl records to a standard barely imaginable.

The fully symmetrical circuit topology of the *statement phono* preamplifier together with the ability to use either RIAA, or almost any other phono equalization curve makes the *statement phono* preamplifier one of the most flexible and sophisticated phono preamplifiers in the entire audio world. Hand selected and matched electronic parts such as extremely low noise resistors and non-magnetic silver-glimmer capacitors contribute towards the phenomenal performance.

- Fully symmetrical analogue circuit
- Extremely low noise resistors and non-magnetic silver-glimmer capacitors
- Remote control input load adjustment
- RIAA and fully adjustable equalization curves
- 2 phono inputs
- 3 additional analogue inputs
- Fully symmetrical accu power supply in separate, massive housing.
- Double shielded case construction

We wish you a lot of pleasure with your new **Clearaudio** *statement phono* preamplifier!

### **Clearaudio electronic GmbH**

This section must be read before any connection is made to the mains supply.



## Safety instructions

### 1. General information

Check the device for visible damage before using it for the first time.

If the device is damaged, it should not be connected to the mains.

Also, never connect the device if it has been dropped or gotten wet, contact your dealer to have the device inspected.

Never expose the device to rain or moisture.

Never touch the power cord of the device with wet hands.

For your own safety, regular visual inspections of any defective insulation on the connection cable are also recommended. A damaged cable should be replaced immediately by a specialist!

Never pull on the power cable to unplug the device, but directly on the plug!

The inside of the device is maintenance-free, never open the housing or try to repair the device yourself. This can also lead to loss of warranty.

If you do not operate the device for a longer period of time, we recommend disconnecting the power supply from the mains.

Not suitable for children! Scope of delivery may contain small parts that can be swallowed.

### 2. Intended use

The *statement phono* is a phono preamplifier to amplify the signal of the phono cartridge.

The intended use of the *statement phono* in accordance with the information provided in the user manual only.

The power supply may only be operated with maximum permissible connection values according to the technical data. Any other use or modification of this product is not intended.

### 3. Location of installation

The device should only be set up on leveled surfaces.

Avoid location with direct sunlight, temperature fluctuations and high humidity. Likewise, avoid placing electronic devices near heaters, heat lamps, or other devices that produce heat. The device is designed for operation in heated rooms.

Never block the ventilation slots or cover the device with a cloth or similar.

No objects with an open flame may be placed on the device (burning candles or similar).

Phonostages provide a very high level of amplification, to address the fact that the electrical signal generated by a phono cartridge is extremely low. As a result, phonostages are extremely sensitive, which leads to the potential problem that high-frequency interference may also be amplified to a point at which it becomes noticeable. Unfortunately it is not possible to completely protect the sensitive phonostage circuitry from this interference without degrading its high fidelity performance.

Therefore care must be taken to position the phonostage away from sources of high frequency interferences such as mobile phones, modems and powerline communication systems (PLC) in which data is sent over the mains power network.

### 4. Overload

The product is designed to comply with all necessary safety regulations, however you should not leave the device unattended under extreme loads.

### 5. Maintenance

Only use a soft cloth with a smooth surface for cleaning. Never use aggressive cleaning detergent.

### 6. Health information

Permanently high volume can lead to various types of hearing damage. Use high volume responsibly!

### 7. Service

During the gurantee period, the *statement phono* may only be repaired by the manufacturer, otherwise the warranty will become void.

All **Clearaudio** products should only be serviced by specialist retailer.

If despite the high production standard, a repair is necessary, the *statement phono* must be sent to **Clearaudio** through your dealer.

### 8. Transport

Always us the original packaging when transporting the **Clearaudio** *statement phono*.

Be sure to pack the device exactly as it was shipped.

Safe transport is only guaranteed in the original packaging.

When packing, proceed in reverse as described for assembly.

### 9. Disposal



Do not dispose this product together with other waste.

WEEE Reg. No.: DE26004446

### 10. CE Marking



This electronic product corresponds to the applicable guidelines for obtaining the CE mark.



## Contents

<b>1. Packing overview .....</b>	<b>6</b>
<b>2. Setup .....</b>	<b>6 - 7</b>
<b>3. Back view of the <i>statement phono</i>.....</b>	<b>8</b>
<b>4. General information of the display modes .....</b>	<b>9 - 11</b>
<b>5. Troubleshooting .....</b>	<b>12</b>
<b>6. Technical specifications.....</b>	<b>13</b>
<b>Warranty information.....</b>	<b>14 - 15</b>

## 1. Packing overview

The **Clearaudio** *statement phono* is delivered in special packaging to ensure its safe transport. Retain this original packaging for any future transportation. Please check the contents immediately after unpacking:

- **Clearaudio** *statement phono* preamplifier
- External power supply
- 1 Power cord
- 2 Connection cords
- User manual
- Warranty card
- **Clearaudio** quality control card

To achieve the full performance of the *statement phono* preamplifier, please read the instruction and user manual carefully.

The following pages will ensure the best performance and will help to avoid any misuse.

## 2. Set up

### 2.1. Placement of the *statement phono*

The *statement phono* should be placed close to the turntable in order to use as short as possible phono cables between the tonearm and the *statement phono*. The best connection between the cartridge and the *statement phono* will be achieved with a direct-wired tonearm.

The *statement phono* should be placed as far away as possible from motors, transformers, power amplifiers or any other source of hum-inducing magnetic fields.

### 2.2 Applying Power

The external power supply contains two separated power supplies, which provide four individual supplies to each channel. Before applying power, check the voltage indication on the external power supply is correct for the local AC power in your country. Connect both 15-pin D-Sub-connectors to the *statement phono* and lock with the integrated screws, then connect the AC power cord and turn on the AC power-switches on the power-supplies.

After 3-5 seconds the "Mute LED" turns off and the signal outputs are working.

#### **Note:**

Never disconnect the D-Sub connector from the *statement phono* if the power supply is still on. Before you disconnect the D-Sub connector from the power supply or from the *statement phono*, make sure, that the AC Power switch is in the OFF position! Only then you can disconnect the D-Sub connectors.

For optimal audio performance we recommend that the *statement phono* is left continuously switched on stand by made to minimize thermal cycling of the components.



### 2.3 Input and Output Connections

The quality of the interconnect cables are extremely important in realizing the full sonic potential of the **Clearaudio** *statement phono*. Ideally the interconnect needs to be symmetrically designed, not coaxial.

Inputs and outputs for left and right channels are marked accordingly on the rear panel.

If you are using the unbalanced RCA-Inputs, the 'Input Select Switch' must be in the "Unbalanced" position, if using the XLR connector the switch must be set to "Balanced" it valids by balance+.  
By Statement are everything other.

To achieve the best high fidelity performance you also can connect the *statement phono* directly to your power amplifier. The automatic mute function will prevent any noise from reaching the loudspeakers if the statement phono is turned on or off while the power amplifiers are still turned on.

### 2.4. Minimizing Hum

**Note:** You should minimize hum before listening to an LP record!

Also we recommend the use of phono cables with symmetrical design such as **Clearaudio** "Quint" or "Sixstream".

To minimize hum and other undesirable noise, if possible you should use the balanced inputs and outputs.

Also always take care to ensure an effective 'Ground' connection to your turntable.

#### **Please note:**

Phonopreamplifier are devices with a high signal gain, because the voltage which is supplied by the cartridge of the turntable is very low (in the range of a few  $\mu\text{V}$ ). For this reason high frequency interference signals are noticeable reinforced. A complete blocking of these interference signals in the device would degrade the audio performance.

A result could be that high frequency interference, for example from the 230 V net or 115 V AC will affect the sound quality.

The device should therefore not operate near to high frequency generating devices such as mobile phones or modems or electricity networks for data transport (PLC).

### 3. Rear view of statement phono



Pic. 1: Back view of the *statement phono*

Pin connections: Inputs and Outputs  
XLR:

- Pin 1 = GND (Shield)
- Pin 2 = Hot (+)
- Pin 3 = Cold (-)

Power Supply  
15-pin. D-Sub Connector:

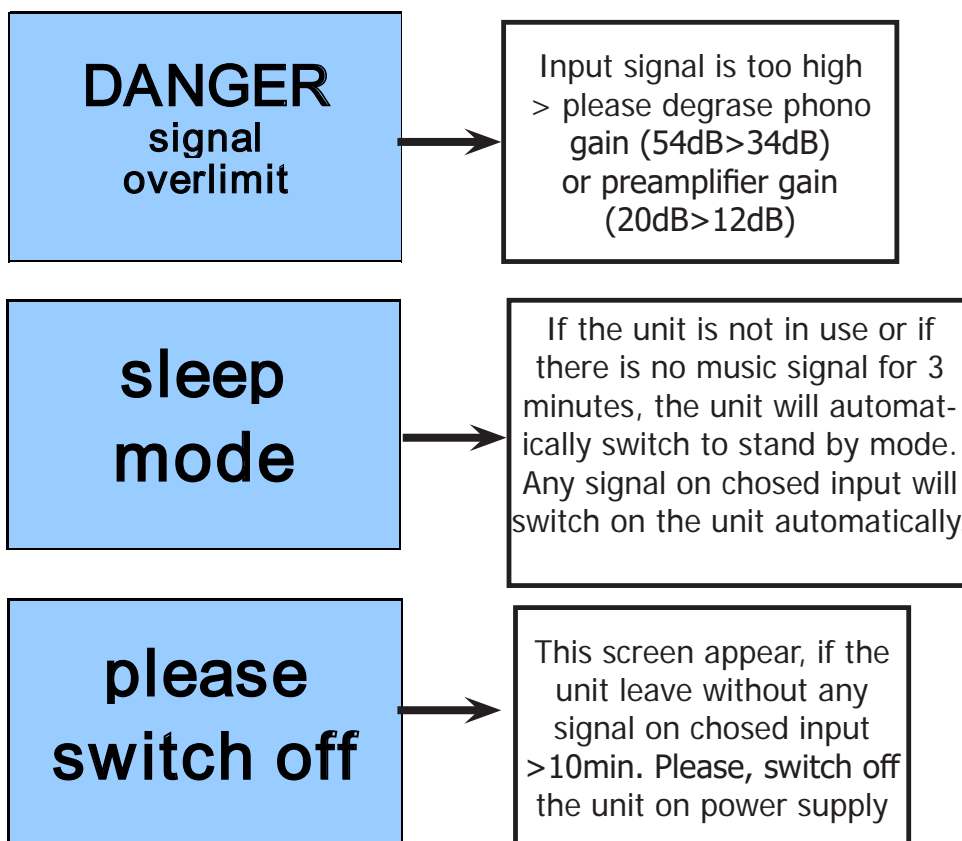
- Pin 1, 9 = -18 V output class A buffer
- Pin 2 = GND remote control
- Pin 3, 5, 10, 13 = GND
- Pin 4, 11 = -18 V phono preamps
- Pin 6, 14 = +18 V phono preamps
- Pin 7 = +15V remote control
- Pin 8, 15 = +18 V output class A buffer
- Pin 12 = remote

**If you use a mobile phone near the *statement phono*, the audio performance can be influenced!**

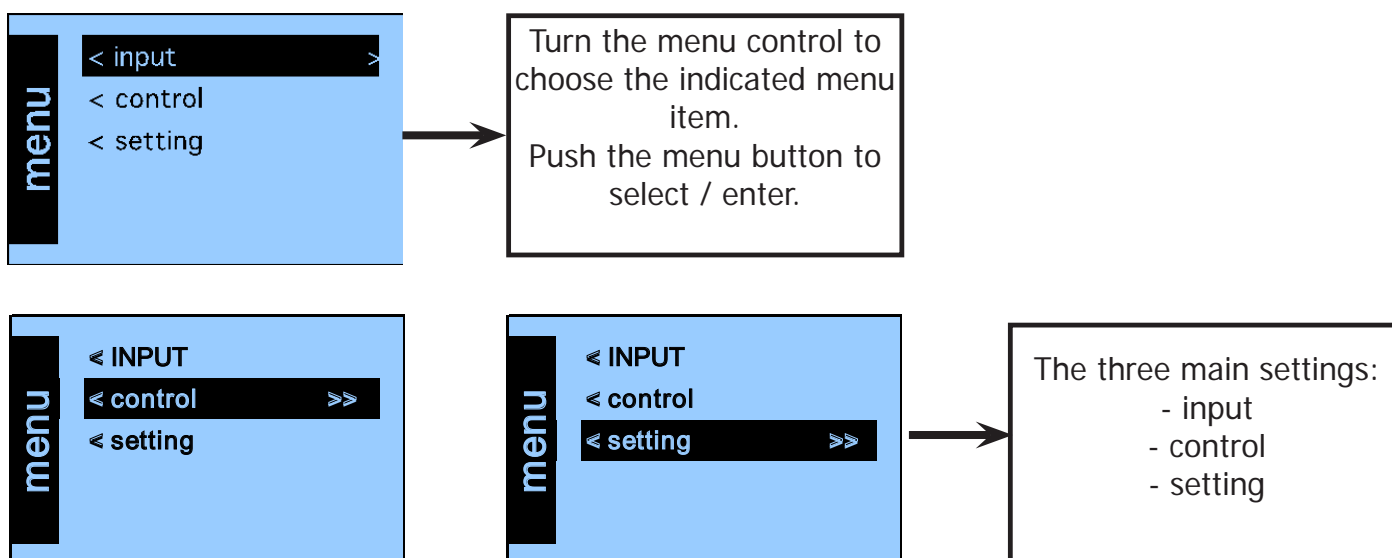


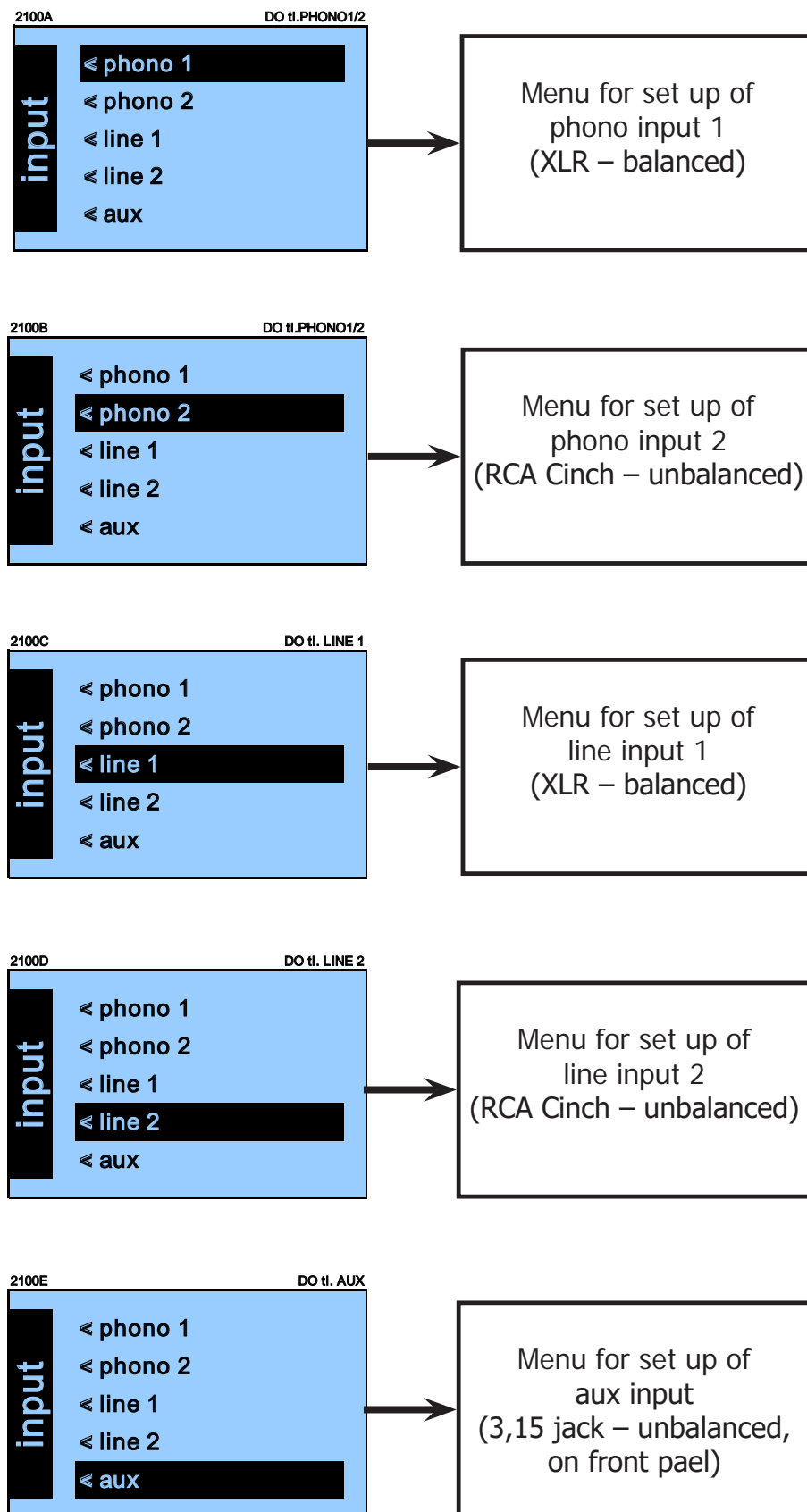
#### 4. General information of display modes

The letters in the display will be highlighted in each menu step or in any location you are.

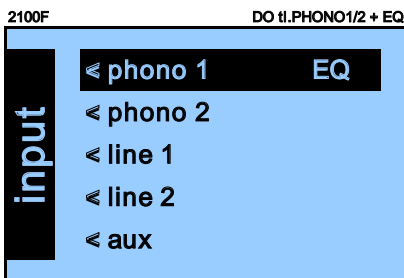


#### MENU:



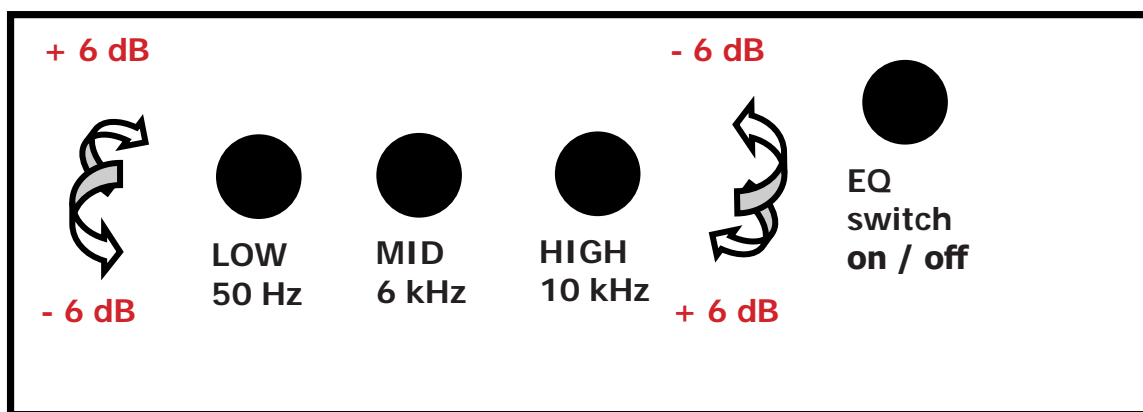


# User manual

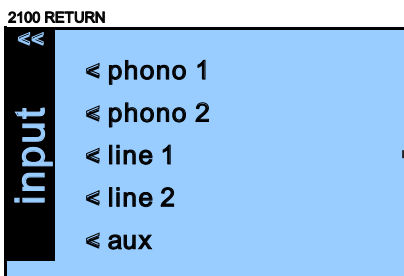


Display indicates that the "RIAA Equalization" is switched on. Only possible in phono 1/2 mode. For more information please see "RIAA Equalization".

## RIAA Equalizer (EQ) on:

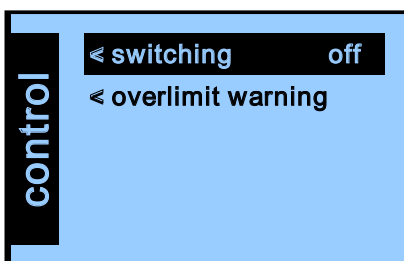


RIAA curve usage described in a follow up appendix!

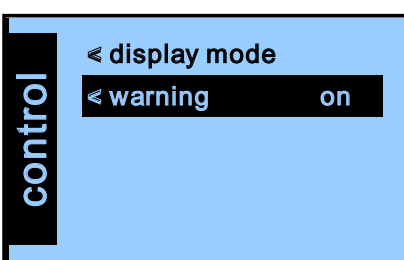


Return to "input main menu". Choose your input by turning the menu button and push to confirm

## Control:



By pushing "switching on/off". - the background blue screen switched off in 3 sec after any change you make on menu per MENU knob or RC



By pushing "warning on/off" you can choose whether the overlimit warning will be indicated in the display or not. We recommend that this is left "on".

## 5. Troubleshooting

If you have a problem with your *statement phono*, first check the possible causes to rule out incorrect operation.

If the error persists, please contact your dealer!

**Never try to open the device and/or repair it yourself, this will void the warranty!**

Error	Cause	Measure
<b>Device does not work</b>	Is the power cord plugged in and the power switch turned on?	Check the connection.
<b>No sound or low volume?</b>	Did you choose the right input?	Check the connections of your hifi components.
	Have you selected the correct operating mode?	Check the settings on the underside of the phono stage.
	Is the device in „mute“ mode or is the volume set too low?	Check the volume setting of your device.
	The connection cables are not properly connected.	Check the tonearm and cartridge connections due the their respective user manual.
	Devices with a headphone output only: Are the headphones still plugged in when you are trying to play music through the speakers?	Disconnect the headphones.
<b>Hum or noise</b>	The ground cable is not connected or is faulty.	Connect the grounding cable from the turntable/tonearm to the respective grounding connection on the back of the device. If there are several ground connections, interrupt them one after the other and check the sound quality again.
	The device should not be operated in the vicinity of high-frequency devices such as mobile phones or modems or on power supply systems used for data traffic (PLC).	Make sure there is a minimum distance of 30cm between the power supply units of any type and the MC preamplifier or phono preamplifier. Powerlan adapters should not be operated on the same socket as the phono preamplifier.
<b>One channel quieter or louder</b>	The channels of an input are set differently.	Check the settings on the underside of the phono stage. These must be carried out identically for an input.
<b>Remote control does not work</b>	The sensor of the phono stage is covered.	Do not place any other objects in front of the phono stage, as these could interfere with reception.
	You are out of range of the receiver.	Get closer to the device.
	The battery of the remote control is exhausted.	Replace the battery as described in this user manual.



## 6. Technical specifications

<b>Mode:</b>	MM / MC switchable // Subsonic filter switchable
<b>Amplification:</b>	+ 34dB (MM mode) + 54dB (MC mode)
<b>Input load:</b>	47k $\Omega$ (MM mode) 25 $\Omega$ - 10k $\Omega$ (MC mode)
<b>RIAA accuracy:</b>	$\pm$ 0.05dB / 20 - 100kHz
<b>THD:</b>	5mV / 1kHz / +50dB: < 0.0035% 0.5mV / 1kHz / +70dB: < 0.0015%
<b>Signal to noise ratio:</b>	5mV / 1kHz / +50dB: -82dB / -90dB (A-weighted) 0.5mV / 1kHz / +70dB: -72dB / -80dB (A-weighted)
<b>Headroom:</b>	+ 25dB
<b>Max. output voltage:</b>	> 12V
<b>RIAA:</b>	75 $\mu$ s / 318 $\mu$ s / 3180 $\mu$ s, 2 passive filter
<b>Channel separation:</b>	> 80dB (at 1kHz)
<b>Output impedance:</b>	10 $\Omega$
<b>Inputs:</b>	Phono 1: balanced XLR (rear) Phono 2: unbalance RCA (rear) Line 1: balanced XLR (rear) Line 2: unbalanced RCA (rear) AUX: Jack 3.5mm (front)
<b>Outputs:</b>	unbalanced (RCA) balanced (XLR) headphone output (Jack: 6.3mm)
<b>Power consumption:</b>	Max. consumption: 200 watts In operation: 50 - 100 watts Standby mode: < 0.5 watts Off mode: 0.0 watts
<b>Power supply:</b>	Fully symmetrical line and Accu - power supply
<b>Main power / channel:</b>	2 x 2 x 22V / 1A
<b>Battery power / channel:</b>	2 x 18V / 3.2Ah
<b>Total weight preamplifier:</b>	Approx. 12kg
<b>Total weight power supply:</b>	Approx. 22kg
<b>Dimensions preamplifier (W/D/H):</b>	Approx. 435 x 350 x 100mm
<b>Dimensions preamplifier (W/D/H):</b>	Approx. 17.13 x 13.78 x 3.94 inches
<b>Dimensions power supply (W/D/H):</b>	Approx. 435 x 350 x 100mm
<b>Dimensions power supply (W/D/H):</b>	Approx. 17.13 x 13.78 x 3.94 inches
<b>Manufacturer's warranty:</b>	5 years*

\* Provided that the warranty card is correctly completed and returned to **Clearaudio**, or your product is registered online at <https://clearaudio.de/en/service/registration.php>, within 14 days of purchase.

The full, extended warranty period for the *statement phono* is 5 years. To receive this full **Clearaudio** warranty, you must either complete and return the relevant section of the warranty registration card to **Clearaudio**, or register your product online at <https://clearaudio.de/en/service/registration.php>, within 14 days of purchase. Otherwise only the legal warranty can be considered.

The full 5 year warranty can only be honoured if the product is returned in its original packing.

### ENGLISH WARRANTY

For warranty information, contact your local **Clearaudio** distributor.

#### **RETAIN YOUR PURCHASE RECEIPT**

Your purchase receipt is your permanent record of a valuable purchase. It should be kept in a safe place to be referred to as necessary for insurance purposes or when corresponding with **Clearaudio**.

#### **IMPORTANT**

When seeking warranty service, it is the responsibility of the consumer to establish proof and date of purchase.

Your purchase receipt or invoice is adequate for such proof.

FOR U.K. ONLY

This undertaking is in addition to a consumer's statutory rights and does not affect those rights in any way.

### FRANÇAIS GARANTIE

Pour des informations sur la garantie, contacter le distributeur local **Clearaudio**.

#### **CONSERVER L'ATTESTATION D'ACHAT**

L'attestation d'achat est la preuve permanente d'un achat de valeur. La conserver en lieu sûr pour s'y reporter aux fins d'obtention d'une couverture d'assurance ou dans le cadre de correspondances avec **Clearaudio**.

#### **IMPORTANT**

Pour l'obtention d'un service couvert par la garantie, il incombe au client d'établir la preuve de l'achat et d'en corroborer la date. Le reçu ou la facture constituent des preuves suffisantes.

### DEUTSCH GARANTIE

Bei Garantiefragen wenden Sie sich bitte zunächst an Ihren **Clearaudio** Händler. Heben Sie Ihren Kaufbeleg gut auf.

#### **WICHTIG!**

Die Angaben auf Ihrer Quittung erlauben uns die Identifizierung Ihres Gerätes und belegen mit dem Kaufdatum die Dauer Ihrer Garantie-Ansprüche. Für Serviceleistungen benötigen wir stets die Gerätenummer. Diese finden Sie auf dem Typenschild auf der Rückseite des Gerätes oder auch in der beigefügten Garantie-Registrierkarte.

### NEDERLANDS GARANTIE

Voor inlichtingen omtrent garantie dient u zich tot uw plaatselijke **Clearaudio**.

#### **UW KWITANTIE, KASSABON E.D. BEWAREN**

Uw kwitantie, kassabon e.d. vormen uw bewijs van aankoop van een waardevol artikel en dienen op een veilige plaats bewaard te worden voor evt, verwijzing bijv, in verbond met verzekering of bij correspondentie met **Clearaudio**.

#### **BELANGRIJK**

Bij een evt, beroep op de garantie is het de verantwoordelijkheid van de consument een gedateerd bewijs van aankoop te tonen. Uw kassabon of factuur zijn voldoende bewijs.

 **ITALIANO**  
**GARANZIA**

L'apparecchio è coperto da una garanzia di buon funzionamento della durata di un anno, o del periodo previsto dalla legge, a partire dalla data di acquisto comprovata da un documento attestante il nominativo del Rivenditore e la data di vendita. La garanzia sarà prestata con la sostituzione o la riparazione gratuita delle parti difettose. Non sono coperti da garanzia difetti derivanti da uso improprio, errata installazione, manutenzione effettuata da personale non autorizzato o, comunque, da circostanze che non possano riferirsi a difetti di funzionamento dell'apparecchio. Sono inoltre esclusi dalla garanzia gli interventi inerenti l'installazione e l'allacciamento agli impianti di alimentazione.

Gli apparecchi verranno riparati presso i nostri Centri di Assistenza Autorizzati. Le spese ed i rischi di trasporto sono a carico del cliente. La casa costruttrice declina ogni responsabilità per danni diretti o indiretti provocati dalla inosservanza delle prescrizioni di installazione, uso e manutenzione dettagliate nel presente manuale o per guasti dovuti ad uso continuato a fini professionali.

 **ESPAÑOL**  
**GARANTIA**

Para obtener información acerca de la garantía póngase en contacto con su distribuidor **Clearaudio**.

**GUARDE SU RECIBO DE COMPRA**

Su recibo de compra es su prueba permanente de haber adquirido un aparato de valor, Este recibo deberá guardarlo en un lugar seguro y utilizarlo como referencia cuando tenga que hacer uso del seguro o se ponga en contacto con **Clearaudio**.

**IMPORTANTE**

Cuando solicite el servicio otorgado por la garantía el usuario tiene la responsabilidad de demostrar cuándo efectuó la compra. En este caso, su recibo de compra será la prueba apropiada.



Loving music

### **clearaudio electronic GmbH**

Spardorfer Straße 150  
91054 Erlangen  
Germany

Phone /Tel.: +49 9131 40300 100

Fax: +49 9131 40300 119

[www.clearaudio.de](http://www.clearaudio.de)

[www.analogshop.de](http://www.analogshop.de)

[info@clearaudio.de](mailto:info@clearaudio.de)



### **Handmade in Germany**

**Clearaudio Electronic** accepts no liability for any misprints.

Technical specifications are subject to change or improvement without prior notice.

Product availability is as long as stock lasts.

Copies and reprints of this document, including extracts, require written consent from

**Clearaudio Electronic GmbH, Germany.**

**2024**